

The CHAIRLIFT CHATTER



August 2022

www.skissc.com

P.O. Box 60713 Harrisburg, PA 17106-0713

PRESIDENT'S CORNER

Greetings SSC Members – It's hard to believe that the summer is almost half over. The SSC Annual Summer Picnic at Tall Cedars, Cedars Grove was nicely attended and trips sales opened for the 2022-2023 season. If you still have not signed up for one of our trips, please check the trip status report below to find out which trips still have availability. This year sales were evenly distributed as no trips oversold and no lotteries were held. Don't forget to protect yourselves and review your trip insurance needs.

Our Social Committee has a wide variety of events scheduled for the rest of summer and clear into fall. September 6, 2022 will be the return of our Membership Meetings at Boomerang Bar & Grille. Make sure to visit the list of upcoming events and save those dates on your social calendar.

Be safe, healthy and enjoy the rest of your summer.

Bob

SSC is looking for a member to assist us with the rental of The Barn @ Lower Allen Park for the Halloween Party.

It's time to start planning your costumes! Stay tuned more details to follow!

Who: The SSC Board of Directors

What: A Halloween Party

When: October 29, 2022

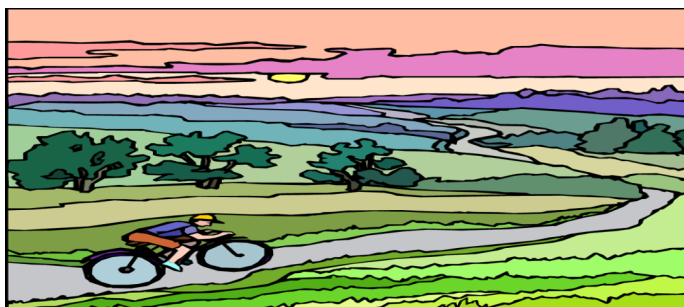
Where: The Barn @ Lower Allen Park

Why: It's been years since the last one

Please contact Bob Havice @ bhavice@hotmail.com or 717-248-8696 for details!!

UPCOMING EVENTS & TRIPS

July 19	Happy Hour/Movie Night (new location) Harvest Seasonal Grill
July 23	Thun (Tune) Trail Bike ride
July 27	Board Mtg (Zoom)
July 29	Deck Party – Fiddlers @ Mayapple Golf Course
August 4	Miniature Golf – City Island/ Hbg. Beach Club
August 11	Deck Party – Spring Gate (Devonshire Rd)
August 13	Buffalo Valley Rail Trail Ride
August 16	Happy Hour/Movie Night (new location) Harvest Seasonal Grill
August 26	Deck Party – Wolf Brewery (Mechanicsburg)
August 27	Bike/Hike/Kayak Picnic
August 31	Board Meeting (Zoom)
Sept 6	Membership Mtg – Boomerang Bar & Grill
Sept 20	Happy Hour/Movie Night (new location) Harvest Seasonal Grill
Sept 24	Deck Party - Cassel Vineyards Hershey
Sept 25	Fund Raising Event – Iron Man Challenge/ Central Pa Conservancy
Oct 2	Gettysburg Bike Ride
Oct 4	Membership Mtg @ Boomerang Bar & Grill
Oct 13	Deck Party – Dockside Willies
Oct 18	Happy Hour/Movie Night (new location) Harvest Seasonal Grill
Oct 29	Halloween Party – Lower Allen Park (Barn)



UPCOMING
EVENTS

Please view the full list of events by going to the SSC website



SUMMERTIME IS DECK TIME!

It's Deck Time again! This year we are changing things up by flipping days of the week for some of these events. It's time for gathering with friends old and new at local decks/patios throughout the SSC area. No reservation or membership needed! Arrive at the selected destination at 5 PM or later, look for folks gathered around tables displaying SSC table tent cards and JOIN IN! This is a great way to meet club members and discover SSC. Below is the schedule of our 2022 deck events for the rest of the season. Hope to see you there!

Friday, July 29 th	@ Fiddlers Bar & Grill @ Mayapple Golf Course, 1 Mayapple Drive, Carlisle
Thursday, August 4 th	@ Harrisburg Beach Club, City Island, 700 Riverside Drive
Thursday, August 11 th	@ Spring Gate Vineyard, 5790 Devonshire Road
Friday, August 26 th	@ Wolf Brewery, 100 Legacy Park Drive, Mechanicsburg
Saturday, Sept 24 th	@ Cassel Vineyards of Hershey, 80 Shetland Drive, Hummelstown
Thursday, Oct 13 th	@ Dockside Willies, 449 S Front Street, Lemoyne

THUN TRAIL BIKE RIDE

Saturday, July 23 @ 10:00 am

On July 23, Saturday (rain date Sunday, 7/24), I will lead the biking group from Pottstown (parking in the lot at Berks Co. Heritage Center and nearby Montgomery Community College, 140 College Drive). We will bike the Union Canal Towpath, part of the Schuylkill River Trail System, the Thun Trail (pronounced "Tune" Trail), follows the former PA railroad, built along the historic Schuylkill Canal. Near the trail in Gibraltar is the Allegheny Aqueduct, a stone structure built in 1824 to carry the Schuylkill Canal across the Allegheny Creek. Beautiful railroad bridges, built in 1918, provide impressive views of the river and surrounding hills. Several miles toward Birdsboro is Morlatton Village, a Swedish settlement that has been restored.

We will meet in the parking lot at 10:00 a.m., to be on the trail around 10:15 a.m. We will bike from Pottstown Riverfront Park to Birdsboro (11.5 mi.), stopping at Morlatton Village (7mi.), on the way. Those wanting to bike further can continue on to Gibraltar (14mi.) and Reading Riverfront Park (18 mi.). Then, return to Pottstown and meet for lunch, snacks and beer at "The Pourhouse" 636 E. High St. **Please contact Bonnie Neher (bneher1@gmail.com) for information.**

DIRECTIONS: From Hbg. 81 N to 78 E, exit 29 to Pottstown/Reading follow I 61 to rail trail.



WATER GOLF on CITY ISLAND

Thursday, August 4 @ 3:30 pm



OK SSC members....This is not roller skating....no fear of falling unless you trip over a golf ball.

Please join us for a round of golf at City Island Water Golf. (Bring the kids and grandkids) Beautifully landscaped, 18 hole Miniature Golf Course is located adjacent to the Beach House on the North end of City Island. Challenging style of play Includes water hazards, sloping greens, waterfalls and a 60 foot walking bridge that spans two scenic bluffs. The beauty of the gentle Susquehanna River, cool summer breezes, and breathtaking sunsets will give visitors to Water Golf one of the most scenic rounds of miniature golf they have ever experienced. The Championship-style course will delight young and old alike. Both experienced golfers and novices will find each hole unique, fun-filled and exciting. Adjacent to the 13th Hole, golfers can take a breather in the Susquehanna Overlook. Rest a moment on the swings under the climbing Rose & Hydrangea Trellis or use the Courtyard Style Deck for the perfect backdrop. After a round of golf, we will wander over to the Harrisburg Beach club for refreshments. (Our deck party) If you are not joining for golf, please join us for our deck event! Contact for water Golf is **Suzanne Laughman 717 503 3523 or adventuregal57.sl@gmail.com**

Park in the lot between the 2 bridges and walk to the northern end of City Island adjacent to the beach house. Costs are as follows: Green **Rates:** Adult.....\$9.00, Child.....\$8.00, * Includes 10% Amusement Tax.

2022-2023 SSC TRIP STATUS

Trip application forms and trip terms may be found on our website (skissc.com/trips). Your SSC membership must be current to sign up for a trip.

Dates	Trip Destination	Trip Leader	Status	Contact information
December 4-11, 2022	Cancun, Club Med Yucatan Mexico	Pam Neidig	Open: Rooms will need to be turned back by Aug. 27	Pamneidig.ssc@gmail.com 717-507-7196
January 22-29, 2023	Palisades at Tahoe, California (IKON)	Dyan Yingst	Open: Single male needed	skierdyan@comcast.net 717-979-4152
February 4-11, 2023	Park City, Utah (EPIC) Lift tickets not offered with this package. You will need to purchase either a Full EPIC pass, EPIC local pass or a 5 or 6-day All Resorts Epic Day Pass on your own.	Priscilla St.Jacques-Glusko	Open: Few spots available	pstglusko@verizon.net 717-343-9322
February 18-25, 2023	Aspen/Snowmass, Colorado (IKON)	Linda Randby	Open	llaub4@comcast.net 717-576-2301
March 4-11, 2023	Telluride, Colorado (EPIC) Lift tickets not offered with this package. You will need to purchase either a Full EPIC pass or a 5 or 6-day All Resorts Epic Day Pass on your own.	Suzanne Laughman	Waiting list	Adventuregal57.sl@gmail.com 717-503-3523

www.ikonpass.com : IKON www.epicpass.com : EPIC www.indyskipass.com :INDY PASS

PLEASE COMMIT EARLY TO AVOID THE CANCELLATION OF THESE TRIPS

The contracts we have this year are very stringent in their deadlines which require us to have a certain number of participants by unusually early dates. If we must cancel a trip by the due date because of lack of participation, we are still responsible for paying cancellation fees to the hotel, tour operator or airlines. Please commit early, so your club does not have to absorb these fees and that these trips can proceed as planned.

TRAVEL INSURANCE IS HIGHLY RECOMMENDED!

Attention trip participants, especially in light of recent unforeseen events. It is the responsibility of each participant to secure their own insurance based on their individual needs. If you have a pre-existing condition most insurance companies require you to obtain insurance within two weeks from the date you made your trip deposit (this may vary among insurance companies).

CLUB MED CANCÚN YUCATÁN, MEXICO

December 4-11, 2022

Sunday-Sunday

July and August sales will determine the final size of our trip to beautiful Club Med Cancún, Mexico. Anyone interested in signing up for this trip must do so no later than August 27. As of July 6, we have three unsold rooms – is one of these yours?

It may still seem like summer, but for planning purposes, this December trip is just around the corner. If you've been thinking of joining us in Cancún, don't wait any longer to sign up, as we'll need to return any unsold rooms/air seats in late August. There are still three unsold rooms on this trip, so if you've been daydreaming about the Riviera Maya's crystal-clear water and white sand beaches, now's the time to make it happen! **Join us for eight unforgettable days (and seven unforgettable nights!) in early December at the all-inclusive, luxurious Club Med beach resort in Cancún, Mexico.** Surrounded by beautiful vistas of land and sea and ancient Mayan cultural sites, Club Med Cancún, operating at limited capacity, offers a safe environment in which to relax and unwind, with airy outdoor areas, al fresco dining and bars/lounges open 24 hours/day, three white sand beaches next to the world's second largest coral reef, three outdoor pools, an extensive array of land and water sports to choose from, and intimate evenings with entertainment or live music with shows and dancing.

In case you're thinking early December is your last best time to get fit for ski season, Club Med is the place to stay on track with this goal. Think about it – warm weather and unlimited opportunities to indulge your lifelong sports passions or discover new ones. **Do you prefer sports on land or in the air?** Consider Flying Trapeze, Golf, Tennis, Pickleball, Archery, Weight & cardio training, Climbing & hiking, Mountain biking, Badminton, Squash, Basketball, and Volleyball. **Would you prefer sports on or under water?** Choose among Sailing, Windsurfing, Water-skiing, Snorkeling, Wake-boarding, Stand-up paddle boarding, Canoeing, Kayaking, Swimming, Water polo, and Aqua fitness. **And don't forget to indulge your body and mind** with spa treatments, the sauna or Turkish bath, and sessions in Yoga or Pilates....

Priced at \$1,959 per person double occupancy, our package includes round trip motorcoach transportation between the Harrisburg area and Philadelphia International Airport (PHL), non-stop round trip air on American Airlines between PHL and Cancún International Airport (CUN), round trip ground transportation between CUN and Club Med Cancún, superior rooms with furnished balconies and views of the lagoon or gardens, dining available at any time, a full open bar day and night, all tips and taxes, and free access to group lessons led by top professionals. For an additional fee, you can arrange tours of the Mayan ruins at Chichén Itzá or Tulum, go snorkeling with sea turtles in the natural protected area of Akumal, and more.

If you would like a more complete list of the features and amenities of this trip, email a request to **trip leader Pam Neidig** at pamneidig.ssc@gmail.com. If you would like to join us for this pre-ski-season getaway, download a copy of the trip application and trip terms found at <https://www.skissc.com/cancun>, and mail your completed application along with your deposit plus second installment payment (due July 20) totaling \$1,200 per person made out to Susquehanna Ski Club and a photocopy of your passport to Pam Neidig, 204 Hollywood Circle, Camp Hill, PA 17011.

PALISADES TAHOE, CA

January 22-29, 2023

Sunday-Sunday

Palisades Tahoe (formerly known as Squaw Valley) is recognized for its world-class terrain, vibrant ski culture, and Olympic heritage as host of the 1960 Winter Games. The average annual snowfall at Palisades is 400 inches, with a peak of 9050 feet. If you're looking for deep powder, steep chutes and bowls set to the gorgeous backdrop of Lake Tahoe, these two mountains will deliver. If you are new to skiing, you will appreciate the convenient access, welcoming instructors and mountain-top beginner slopes overlooking spectacular views. And if you are somewhere in between, you will enjoy your share of skiable terrain and panoramic views of the lake.

The Village at Palisades Tahoe is both your launching pad for daily adventure and then après-ski following an action-packed day on the mountain. Our lodging will be in two-bedroom condos with a full kitchen and fireplace, all close to outdoor hot tubs. From our convenient slope-side lodging to shops, restaurants, wine bars and outfitters, the Village has everything necessary for a great vacation. Olympic Valley features 3600 skiable acres, 29 lifts, 170 trails and 16 bowls. Add another 2400 skiable acres at Alpine Meadows with its 13 lifts, 100 trails and 7 bowls and you are sure to have fun every day on the slopes.

The package price of \$2,700 pp for double occupancy includes ground and air transportation from Harrisburg to Reno, 7 nights lodging in the Villages at Palisades Tahoe and a 5-day lift ticket. Non-skiers or ICON pass holders can deduct \$525, while those choosing land only packages can deduct \$794. Send your deposit of \$900 payable to SSC and completed trip application to Dyan Yingst, 801 Pheasant Road, Harrisburg, PA 17112-1330. For more information, please email skierdyan@comcast.net or call 717-979-4152.

PARK CITY, UTAH

February 4-11, 2023

Saturday - Saturday

Few spots remaining

ENVISION an opportunity to ski or board in one of Utah's finest ski resorts, Park City. This area is Utah's largest and most dynamic mountain resort, boasting 4,000 acres and 182 trails across nine peaks with diverse terrain for every skier and rider. The Park City Mountain Resort boasts 7,300 acres with 101 designated runs including one into the town of Park City. The board parks consist of big, steep jumps, manmade rails, fixed features, and anything else you could possibly want from freestyle terrain. You are sure to enjoy the 3,100-foot vertical rise, miles of groomed runs, great tree skiing, excellent bowls, and an average of 350 inches of snow annually. We will be staying at the renovated Park City Peaks Hotel. Sparkling new facilities create a modern vintage feel. Our Park Avenue location is minutes from Park City Mountain Resort, Deer Valley Resort, and Park City's Main Street district via complimentary town shuttle. The trip will include round-trip air BWI to Salt Lake, round-trip ground transportation Harrisburg-BWI and Salt Lake-Peaks Hotel, 7 nights lodging at the Park City Peaks, daily full buffet breakfast and welcome reception. All this for the price of \$1549 double occupancy. **Lift passes are NOT INCLUDED in this price. You will need to purchase Full EPIC pass, EPIC local pass or a 5- or 6-day All Resorts Epic Day pass on your own.** Send your signed application and deposit of \$500 (payable to SSC) to Trip Leader Priscilla St.Jacques-Glusko 5969 Clover Road, Harrisburg, PA 17112 or contact Priscilla at pstglusko@verizon.net for questions.

ASPEN/SNOWMASS, COLORADO

February 18-25, 2023

Saturday-Saturday

Join SSC as we return to this outstanding ski and snowboard resort in Aspen/Snowmass, Colorado. You will find more than 5,300 acres of terrain between Snowmass, Aspen Mountain (Ajax), Aspen Highlands and Buttermilk. The "town mountain" offers quad-burning groomers and steep, gladed runs all leading to the heart of Aspen. We are staying at the Stonebridge Inn, a convenient slope side location, which now features an exquisite new outdoor deck, a new fitness facility that overlooks a sparkling outdoor pool area, and recently redecorated guest rooms featuring rich textures and warm earth tones that showcase the breathtaking views of the surrounding mountains. Amenities at this hotel include courtesy transportation from Aspen Airport and Snowmass Village, high speed wireless internet in public spaces and rooms, overnight ski tuning, mini refrigerators, in-room safes, award winning dining at The Artisan Restaurant and Bar, a year-round heated swimming pool and two outdoor hot tubs. There is also great dining, nightlife and shopping in the town of Aspen. This will be a fabulous ski vacation! We hope you will join us!

Package includes Roundtrip air from BWI to Denver, on United Airlines; Roundtrip ground transportation – Harrisburg to/from BWI & Denver to/from Snowmass; 7 nights lodging at The Stonebridge Inn; 7 full buffet breakfasts; 5 of 10-day ski pass (valid at Aspen, Snowmass, Aspen Highlands, and Buttermilk) and round-trip baggage handling. Airline checked baggage fees are NOT included in the basic package price

Basic package prices: \$3933 single occupancy; \$2763 double occupancy; \$2358 Land Only double occupancy; Additional 6th day ticket is available for an additional \$95. *Seniors age 65+:* deduct \$30 for 5-day ticket but add \$85 for 6th day ticket; *Seniors age 80+:* deduct \$390; *Non skiers/IKON pass holder's:* deduct \$390

Send your signed application and deposit of \$700 (payable to SSC) to Trip Leader Linda Randby 4290 Stellata Court Harrisburg, PA 17112 or contact Linda at llaub4@gmail.com for questions.



BUFFALO VALLEY RAIL TRAIL BIKE RIDE

Saturday, August 13

Barb Crout will lead the third annual Buffalo Valley Rail Trail ride, starting at the Rusty Rail Trail Brewery in Mifflintown at 10:30 am. The Buffalo Valley Rail Trail is a 9.5 mile finished scenic trail that is visited by thousands of residents and visitors between Mifflintown and Lewisburg with many trailheads, facilities and parking areas including a couple of breweries and an ice cream shop. Any questions, call Barb Crout at 717-421-1970.

The Buffalo Valley Rail Trail follows the route of a railroad that once ran from Montandon to Bellefonte in Centre County, crossing through Union County on an east-west alignment. The Lewisburg Centre & Spruce Creek Railroad was incorporated in 1853, and immediately faced the difficulties of the Civil War and the St. Patrick's Day flood of 1865. In 1879, the branch was renamed the Lewisburg & Tyrone Railroad Co., and for another hundred years it was a key part of the valley's transportation network. The rise of interstate highway system led to a reduction in rail traffic. In 1982, the line ceased operations.

Directions from Harrisburg:

- 81 N
- exit 67B:US-22W/US-322W..Lewistown/State College
- 22/322 West
- 11/15 North
- SR104 Bear Left off exit
- 13.8 miles -turn left on S Main Street
- 9.1 miles – turn right on Chestnut Street
- 0.1 miles – turn left on N 8th St
- 450 Ft. Rusty Rail Brewing Company

BIKE/HIKE/PADDLE/PICNIC

Saturday August 27, 9:30 AM - ?

Mark your calendars for a day of fun! Grab your bikes and boats and join us at River Front Park (569 Vinegar Ferry Road, Marietta) on Saturday, August 27. Starting at 9:30 AM you can launch your kayak or canoe onto the river, ride a bike along the paved Northwestern Lancaster County River Trail, or take a hike along the trail. Boaters will drop (and lock) their bikes at the take-out and then drive up to the put-in at Bainbridge or Falmouth and paddle down the Susquehanna to the take-out at River Front Park. After lunch they can hop on their bikes and ride up the trail to retrieve their vehicles. (A car shuttle will be available to retrieve vehicles for those who choose not to bike). Bikers will ride south in the morning traveling through Marietta and down to Columbia. Hikers will hike north along the river to check out an eagle's nest along the trail and will then continue north to the White Cliffs of Conoy.

After the morning's activities, everyone is encouraged to hang around for a picnic. Please bring an appetizer, side dish or dessert to share and SSC will provide grilled hot dogs with the trimmings. Following the picnic, it's playtime again, with your choice of paddling, biking or hiking. Or just spread a blanket on the grassy field and enjoy the afternoon. Boaters will launch from our picnic spot and paddle around the area in the Susquehanna River. For those who don't own a kayak and would like to try it, we will have a couple available to try out.

Please check the SSC website after August 22 to confirm the location. For more information, contact Mike Gavin at 717-495-1905 or emailriders1@comcast.net.



MEMBERSHIP APPLICATION and/or RENEWAL

SSC members: If you plan to pay by check, please fill out the application, submit with your check, and mail it to Susquehanna Ski & Snowboard Club, PO Box 60713, Harrisburg, PA 17106-0713. Membership: Single - \$25, Family/Household - \$35, Junior - \$20

MEMBERSHIP CARDS

Your Club is now able to offer its members self-service access to view and print SSC membership cards via our website (skissc.com). All you need to do is log in using the email address where you receive your email newsletter notices and email blasts. If yours is a Family/Household membership, both membership cards are available in this manner. Each member can log in (if both have provided SSC with separate email addresses), or if only one member has done so, that member has access to view and print both members' membership cards. You'll see your new membership card at the top of your Profile after logging in. Additional Family/Household member cards can be viewed by clicking on the hyperlink for those members' names. As in the past, when your membership renewal process is complete, members providing the Club with an email address will also receive a confirmation email that includes their new membership card.

Susquehanna Ski & Snowboard Club – Membership Application/Renewal Form

Membership Year Runs April 1 to March 31

Please Print Clearly, Especially Email Addresses!!

MEMBERSHIP ACTION:

☐ Renewal ☐ New _____
Sponsor name (optional)

MEMBERSHIP LEVEL:

☐ Junior (18-20, dues = \$20/yr). List birthdate: _____

☐ Single Adult (dues = \$25/yr). Ages 21+.

☐ Family/Household (dues = \$35/yr). One or two adults ages 21+ and all dependent minors under 18 years of age who reside at the same physical address.

PAYMENT INFORMATION:

Date _____ ☐ Cash ☐ Check (#) _____

Do not mail cash. Please make checks payable to SSC. Mail to: SSC MEMBERSHIP DIRECTOR, P.O. Box 60713, Harrisburg, PA 17106.

mac2015membership application

MEMBER CONTACT INFORMATION:

Name: _____

Street Address: _____

City: _____ State: _____ Zip: _____

Email: _____

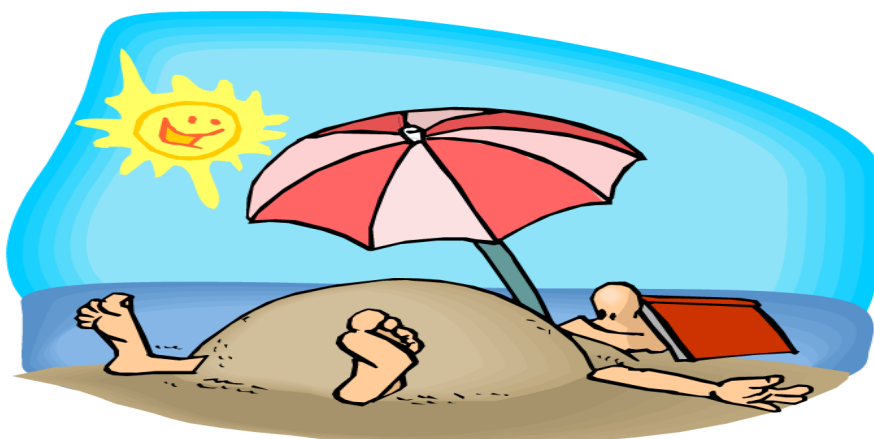
Phone: _____

Family/Household memberships only, list second adult member's contact information, and dependent children's names and birthdates:
Name: _____

Email: _____

Phone: _____

Dependents' names and birthdates: _____



HAPPY HOUR & MOVIE NIGHTS

Tuesdays - July 19, August 16, September 20
We're changing our Happy Hour Location....

Come out and join us for our happy hour/movie night. New friends welcome! You do not have to be an SSC member to come to this event. Eat/Drink/Socialize/relax at the movie! Here's how it works: A few days before each movie night, SSC sends out an email blast with the chosen/suggested movie title and time. We meet at **Harvest Seasonal Grill**, located at 2625 Brindle Drive in The Shoppes at Susquehanna Marketplace usually around 5 PM for a snack and/or a drink before the movie. Then, about 15 minutes before the start of the movie, we drive a short distance to the Regal Harrisburg. Contact Lovena Nickle at 717-541-8803 or lovnice53@comcast.net.

INTERESTED IN HOSTING AN EVENT?

Wine/beer night, bowling, or other activity, Contact Social VP Suzanne Laughman at adventuregal57.sl@gmail.com

SSC Members - email address change??

Please notify your SSC Membership Director, Gary Smith, of any email address change by sending an email to 262gsmith@gmail.com or login to SSC website to make the change on your profile.

SAVE the DATES

October 29 - Halloween Party @ Lower Allen Community Park

November 19 - Get Acquainted Party (GAP).
Dillsburg American Legion

HERSHEY PARK VOLUNTEERS NEEDED

Hershey park volunteers earn money for SSC and at the same time earn 1-3 vouchers for themselves for admittance to Hershey park for each 4-5 hour shift worked. All you have to do is contact Lovena Nickle at lovnice53@comcast.net or 717-541-8803 to sign up as a Hersheypark volunteer. You will need to provide an email address to enable Lovena to communicate with you about open shifts.

WELCOME NEW MEMBERS!!

Lonnie Brooks, Lyn Brubaker, Aundra Dykema, Joseph Dykema, Bonnie Holmes, Ian Holmes, Paul Holmes, Michael Kambic, Wayne Scott, Rodger Sgrignoli, Kristie Soloman



RIDES & HIKES

Weekends are a great time to get out and enjoy the great outdoors with some awesome folks. Weekly rides often include an easy ride, moderate ride and occasionally some fast road rides. Even if you haven't cycled since you were clipping baseball cards to the bike, or are in to a walk/hike with other likeminded people, come join the group. Contact Mike Gavin at emailriders1@comcast.net for a schedule of the weekly bike rides or hikes and to be added to Mike's weekly email updates. If need be, recommendations can be made to obtain a cost-efficient, entry level bike.

SEEKING SSC EVENT SPONSORS!

Do you have a business you would like to promote to SSC's membership? Help sponsor an SSC event and get your business noticed! Current sponsorship opportunities include our Annual Get Acquainted Party and Holiday Party. For more information, please contact Past President Sherry Predix at 717-957-2925 or slpredix@comcast.net.



P.O. Box 60713
Harrisburg, PA 17106-0713

2022-23 BOARD OF DIRECTORS

President—Bob Havice
Trip Vice President—Becky Havice
Social Vice President—Suzanne Laughman
Treasurer—Lynn Hannon
Secretary—Priscilla St. Jacques-Glusko
Membership Chair—Gary Smith
Directors— Barb Collier & Linda Randby
Past President—Sherry Predix

2022-23 SUPPORT STAFF

Audit—Becky Havice
EPSC—Dianne Paukovits
Facebook—Barb Collier & Linda Randby
Meetup—Barb Collier & Linda Randby
Merchandise—Carolyn Eash
Newsletter—Gary Smith
Surveys—Gary Smith
Volunteers—open
Website—Pam Neidig



The Chairlift Chatter is published by the Susquehanna Ski & Snowboard Club (SSC), a 501(c)(7) social and recreational club which encourages participation in the sports of snow skiing and snowboarding among the residents of the greater Harrisburg area and promotes fellowship and goodwill among participants in these sports.